

# Specification Sheet

## For Reversible C-type Beam Clamp

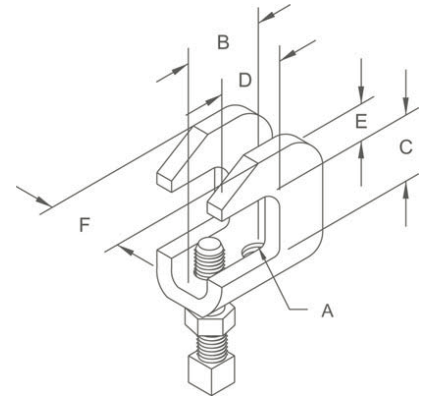
**Size Range:** 3/8", 1/2" and 5/8" rod

**Material:** Carbon steel with hardened cup point set screw and jam nut

**Fuction:** recommended for hanging from steel beam where flange thickness does not exceed 1.1/4"

**Finish:** plain

**Note:** available in Electro Galvanized and HDG finish



### Dimensions • Weights

Rod Size A	B	C	D	E	F	Max. Rec. Load Lbs.*	Approx. Wt./100
3/8	1 <sup>3</sup> / <sub>16</sub>	3/4	1	7/16	1	610	28
1/2	1 <sup>1</sup> / <sub>2</sub>	3/4	1	9/16	1 <sup>1</sup> / <sub>4</sub>	1130	55
5/8	1 <sup>1</sup> / <sub>2</sub>	3/4	1	9/16	1 <sup>1</sup> / <sub>4</sub>	1130	55