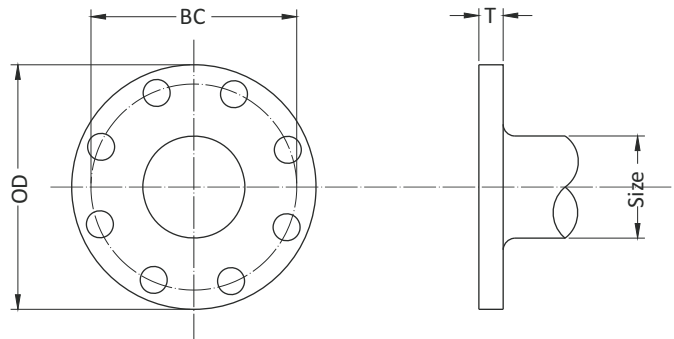


1" - 64" DUCTILE IRON FLANGED FITTINGS

General Specifications

- Material** : Ductile Iron per ASTM A536
- Pressure** : 250 PSI rating for 1" - 48" sizes and 150 PSI rating for 54" - 64" sizes
- Testing** : In accordance with ANSI/AWWA C110/A21.10 and UL, FM requirements
- Laying Length** : 2" - 48" : In accordance with ANSI/AWWA C110/A21.10 | ANSI B16.1
54" - 64" : In accordance with ANSI/AWWA C153/A21.53
(fittings not listed in ANSI/AWWA have dimensions per SIP design as noted in the catalog)
- Drilling** : In accordance with ANSI/AWWA C110/A21.10 | ANSI/AWWA C153/A21.53 | ANSI B16.1 Class 125 Flanges
- Cement Lining** : In accordance with ANSI/AWWA C104/A21.4 -- size 1" - 3" single thickness and sizes 4" - 64" double thickness
- Coating** : Asphaltic seal coat inside in accordance with ANSI/AWWA C104/A21.4 and prime coat red color outside (other coatings and linings are available on request / specified at time of order)
- Weight** : Are in pounds, unless noted otherwise and do not include accessories, cement lining and coating
- Dimensions** : All dimensions are in inches unless noted otherwise.
- Installations** : Per ANSI/AWWA C600 and C111
- Approvals** : 2" - 24" UL Listed | 2" - 24" FM Approved | 2" and higher UL/NSF Standards 61 | 2" and higher NSF/ANSI Standards 61 Approved for Drinking Water. Please consult SIP for detail listing and approvals.



Technical Specifications

SIZE	O.D.	B.C.	T	B O L T S			
				HOLE DIA.	NO.	SIZE	LENGTH
*1	4.25	3.12	0.44	0.62	4	½	2
*1½	5.00	3.88	0.56	0.62	4	½	2
*2	6.00	4.75	0.62	0.75	4	⅝	2 ¼
*2½	7.00	5.50	0.69	0.75	4	⅝	2 ½
3	7.50	6.00	0.75	0.75	4	⅝	2 ½
4	9.00	7.50	0.94	0.75	8	⅝	3
*5	10.00	8.50	0.94	0.88	8	¾	3
6	11.00	9.50	1.00	0.88	8	¾	3 ½
8	13.50	11.75	1.12	0.88	8	¾	3 ½
10	16.00	14.25	1.19	1.00	12	⅞	4
12	19.00	17.00	1.25	1.00	12	⅞	4
14	21.00	18.75	1.38	1.13	12	1	4 ½
16	23.50	21.25	1.44	1.13	16	1	4 ½
18	25.00	22.75	1.56	1.25	16	1 ⅛	5
20	27.50	25.00	1.69	1.25	20	1 ⅛	5
24	32.00	29.50	1.88	1.38	20	1 ¼	5 ½
30	38.75	36.00	2.12	1.38	28	1 ¼	6 ½
36	46.00	42.75	2.38	1.63	32	1 ½	7
42	53.00	49.50	2.62	1.63	36	1 ½	7 ½
48	59.50	56.00	2.75	1.63	44	1 ½	8
*54	66.25	62.75	3.00	2.00	44	1 ¾	8 ½
*60	73.00	69.25	3.12	2.00	52	1 ¾	9
*64	80.00	76.00	3.38	2.00	52	1 ¾	9

* not included in AWWA C110

All dimensions are in inches unless noted otherwise.

All weights are approximate in pounds unless noted otherwise.