

BS STANDARD MALLEABLE IRON PIPE FITTINGS-241BUSHING

Type: 241

Doc No: DS-122-241-01-E

1.0 PRODUCT OVERVIEW

The bushing product is one kind of malleable iron pipe fittings with hexagonal or octagonal internal and external threads, which can connect two pipes of different diameters. The connecting thread is British standard (ISO 7/1).



Dimensions:

1/4"X1/8" (DN8X6)-4"X3" (DN100X80)

Design Standard:

EN 10242, GB/T 3287

Connection Standard:

ISO 7/1, GB/T 7306.2

Working Pressure:

PN16

Application:

The bushing is suitable for medium and low pressure pipeline systems, whose nominal pressure is not exceeding 2.5 MPa and working temperature range is between -20 °C and 120 °C. It is mainly applied in water, oil, air, gas, steam system, etc.

Material of Matching Products:

Q195, EN10255

Surface Treatment:

☐ Black

Sign Off:

Owner: _____ Contractor: _____
Location: _____ Date: _____

Engineer: _____
Approved & Date: _____

- ☐ Hot-dip galvanizing
- ☐ Hot-dip galvanizing+ Electroplated zinc
- ☐ Epoxy power painting
- ☐ Electroplated zinc
- ☐ Others would be available upon clients' detailed request

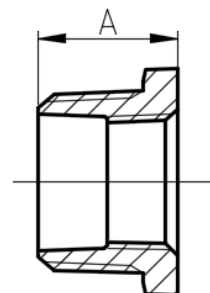
2.0 APPROVALS



3.0 DIMENSIONS AND PERFORMANCE

Dimensions

No	Size	Dim.(mm)	No	Size	Dim.(mm)
		A			A
1	8X6	20±1.5	16	32X20	31±2.0
2	10X6	20±1.5	17	32X25	31±2.0
3	10X8	20±1.5	18	40X10	31±2.0
4	15X6	24±1.5	19	40X15	31±2.0
5	15X8	24±1.5	20	40X20	31±2.0
6	15X10	24±1.5	21	40X25	31±2.0
7	20X8	26±1.5	22	40X32	31±2.0
8	20X10	26±1.5	23	50X25	35±2.0
9	20X15	26±1.5	24	50X32	35±2.0
10	25X8	29±1.5	25	50X40	35±2.0
11	25X10	29±1.5	26	65X40	40±2.0
12	25X15	29±1.5	27	65X50	40±2.0
13	25X20	29±1.5	28	80X50	44±2.0
14	32X10	31±2.0	29	80X65	44±2.0
15	32X15	31±2.0	30	100X80	51±2.5



Performance

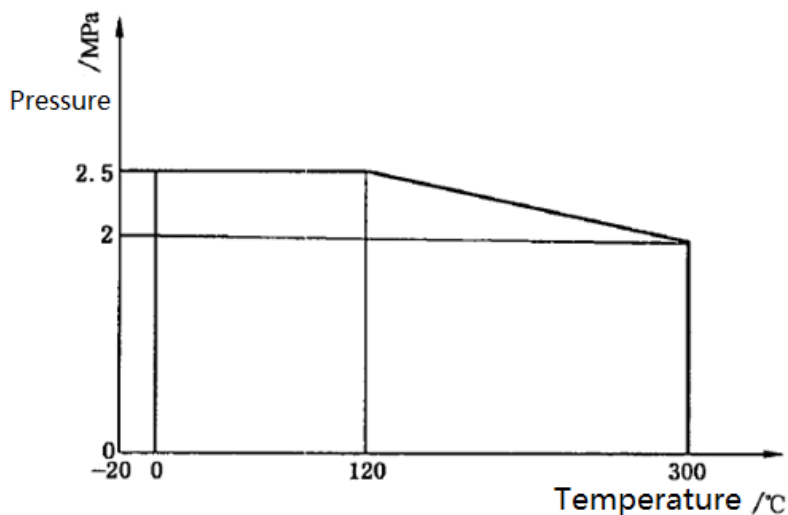
1. All fittings shall comply with the maximum permissible working pressure and temperature range given in the table. The pressure value between 120 °C and 300 °C is determined by linear interpolation. The normal temperature of the pipe is not lower than -20 °C. When used outside the specified pressure and temperature range, it should be negotiated with the manufacturer.

Sign Off:

Owner: _____ Contractor: _____
Location: _____ Date: _____

Engineer: _____
Approved & Date: _____

Temperature Range °C	Max Working Pressure MPa
-20-120	2.5
120-300	Interpolated value
300	2



2. The inside of the pipe fittings shall be able to withstand an air pressure of not less than 0.5 MPa, and the pipe fittings shall be completely immersed in the water tank for visual inspection without leakage.

4.0 REFERENCE MATERIALS

Approved certification for Malleable Iron Pipe Fittings

Sign Off:

Owner: _____ Contractor: _____

Location: _____ Date: _____

Engineer: _____

Approved & Date: _____